



2 Parkfield Place, Highfield, Sheffield, S2 4TH

Saxton Mee



## 2 Parkfield Place Highfield

Asking Price

**£190,000**

Situated in this very popular location of Highfield, a three-bedroom end terrace house is for sale with no chain and benefits from an enclosed rear garden. Ideally suited to first-time buyers or as an investment property, it is well maintained and briefly comprises an attractive living room, a good-sized dining kitchen with a well fitted kitchen area and a range of appliances. On the first floor, there is a large principal double bedroom, a good-sized second bedroom, and a bathroom with a full suite. The attic provides an additional spacious double bedroom.

Highfield is a lively and diverse neighborhood situated just south of Sheffield city center, within the S2 postcode area. Known for its rich cultural heritage and strong sense of community, it offers an excellent balance of urban convenience and local charm.

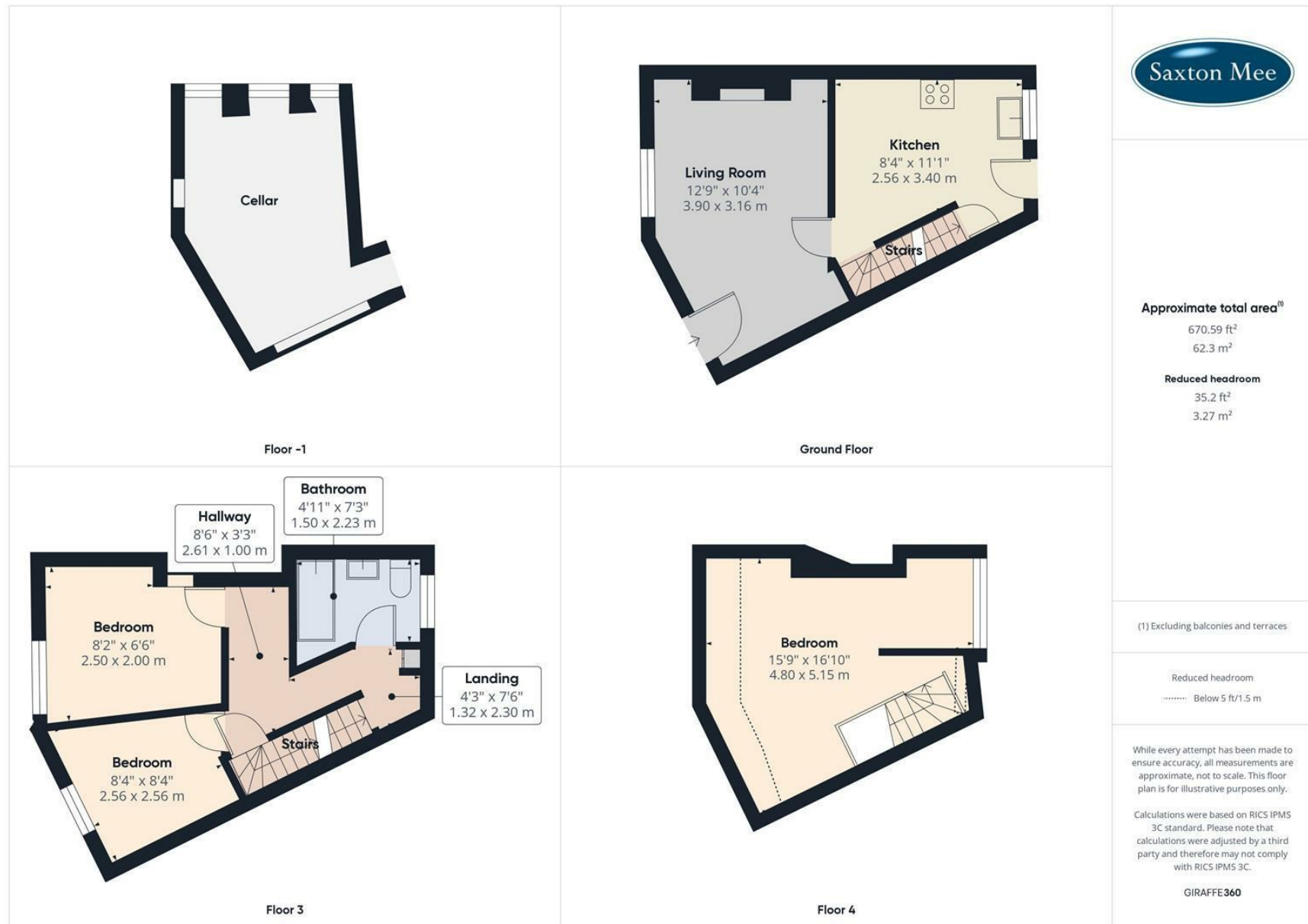


- Three-bedroom end terrace house
- Situated in this very popular location of Highfield
- No Chain
- Enclosed rear garden
- Well fitted kitchen area
- Highfield is a lively and diverse neighborhood situated just south of Sheffield city center
- Council Tax Band: A
- EPC Rating: E
- Tenure: Freehold
- Viewings Via Banner Cross Branch









While we endeavour to make our sales particulars fair, accurate and reliable, they are only a general guide to the property and, accordingly, if there is any point, which is of particular importance to you, please contact the relevant office. The Agents have not tested any apparatus, equipment, fittings or services and so cannot verify they are in working order. The buyer is advised to obtain verification. Please note all the measurement details are approximate and should not be relied upon as exact. All plans, floor plans and maps are for guidance purposes only and are not to scale. Under no circumstances should they be relied upon as exact or for use in planning carpets and other such fixtures, fittings or furnishings. YOUR HOME IS AT RISK IF YOU DO NOT KEEP UP REPAYMENTS ON A MORTGAGE OR OTHER LOAN SECURED ON IT. 'A Life Assurance policy may be requested.' 'Written Quotations of credit terms available on request.'

**Banner Cross**  
T: 0114 268 3241  
E: [bannercross@saxtonmee.co.uk](mailto:bannercross@saxtonmee.co.uk)  
[www.saxtonmee.co.uk](http://www.saxtonmee.co.uk)

**Hathersage**  
T: 01433 650009  
E: [hathersage@saxtonmee.co.uk](mailto:hathersage@saxtonmee.co.uk)

**Bakewell**  
T: 01629 815307  
E: [bakewell@saxtonmee.co.uk](mailto:bakewell@saxtonmee.co.uk)

**Matlock**  
T: 01629 828250  
E: [matlock@saxtonmee.co.uk](mailto:matlock@saxtonmee.co.uk)

